



South East Premium Wheat  
Growers Association  
PO BOX 365  
ESPERANCE, 6450  
www.sepwa.org.au

## 2016 SEPWA Canola (RR Ready) Variety Trial

PROPERTY: Michael Fels Wittenoom Hills UHF:

Phone: (08) 90783014 Fax: (08) 90783083 Mobile: 0428 783 014

### Site Information:

Soil Description: Sandy Loam

### Seeding Details

Date Sown: **8<sup>th</sup> April 2016** (Control 26th May)

Plot 1: **North** Seeding Rate: **2.4 kg/ha**

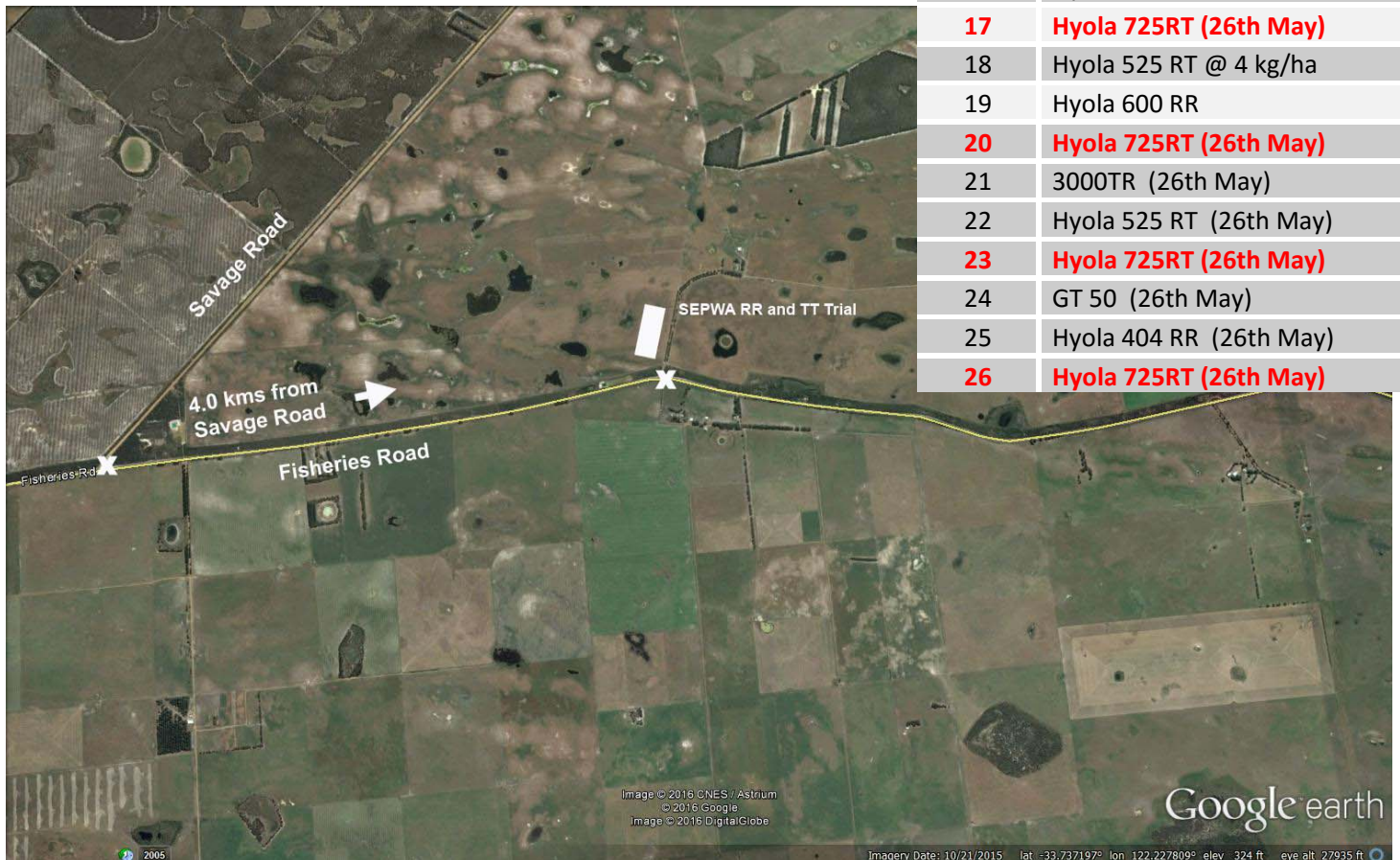
Row Spacing: **18.75 cm** Seed (W): **18. m** Plot (L): **200 m**

### Chemical Application:

**Fertiliser:** MAP 40 kg/ha, Urea 100 kg/ha  
1/5/2016 SOA 60 kg/ha

**PLEASE NOTE – Early sowing plots in TT Trial – northern end**

Plot	Variety
<b>Control : Hyola 725RT (26th May)</b>	
<b>1</b>	<b>Hyola 725RT (26th May)</b>
2	Hyola 525 RT
3	Hyola 725RT
<b>4</b>	<b>Hyola 725RT (26th May)</b>
5	GT 50
6	IH30 RR
<b>7</b>	<b>Hyola 725RT (26th May)</b>
8	IH51RR
9	IH52RR
<b>10</b>	<b>Hyola 725RT (26th May)</b>
11	Hyola 404 RR
<b>12</b>	<b>Hyola 725RT POLES (26th May)</b>
13	NCH13G046
<b>14</b>	<b>Hyola 725RT (26th May)</b>
15	3000TR
16	Hyola 525 RT Plus 150
<b>17</b>	<b>Hyola 725RT (26th May)</b>
18	Hyola 525 RT @ 4 kg/ha
19	Hyola 600 RR
<b>20</b>	<b>Hyola 725RT (26th May)</b>
21	3000TR (26th May)
22	Hyola 525 RT (26th May)
<b>23</b>	<b>Hyola 725RT (26th May)</b>
24	GT 50 (26th May)
25	Hyola 404 RR (26th May)
<b>26</b>	<b>Hyola 725RT (26th May)</b>



Michael Fels - Wittenoom Hills Latitude **-33.65862** Longitude **119.61783**