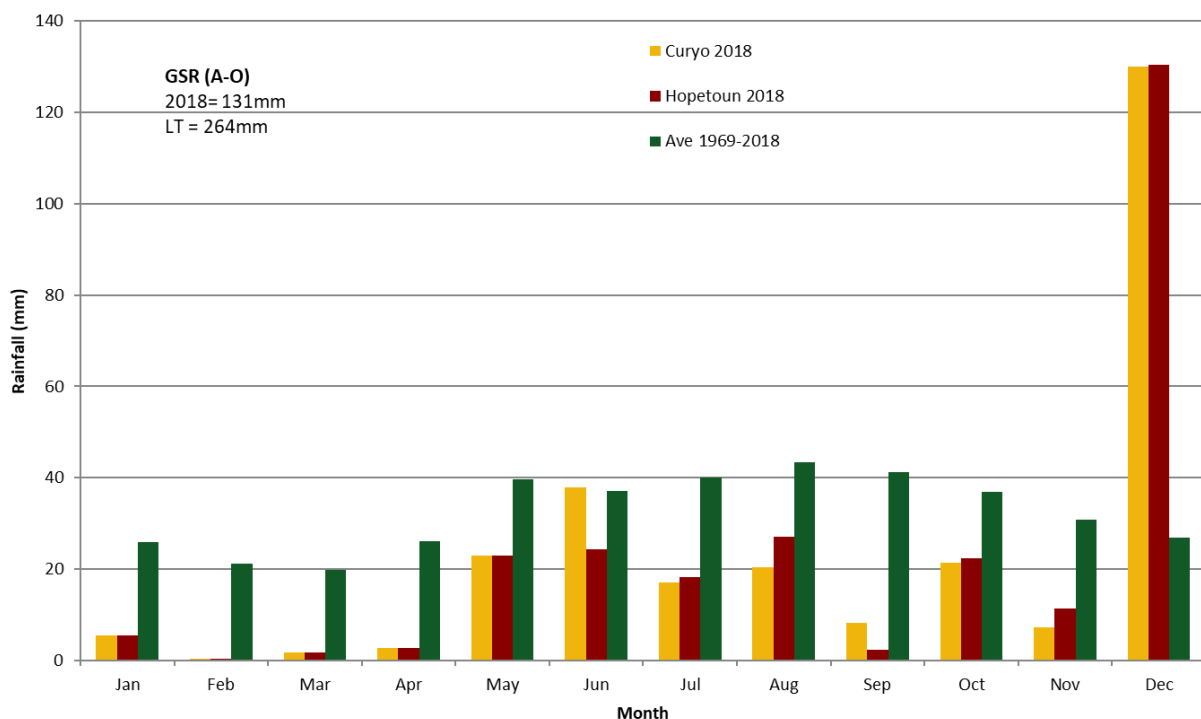


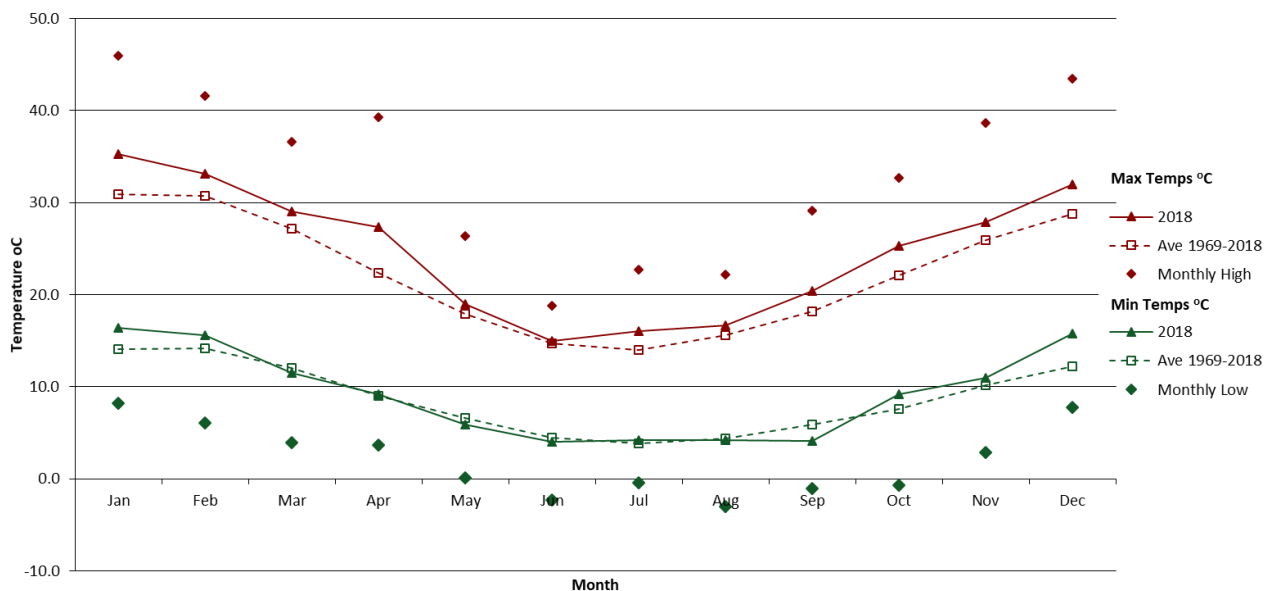
**CURYO, Victoria**  
**Low Rainfall Zone, Southern Mallee**  
GPS -35.76294, 142.75563

## Seasonal Snapshot

- Trials were sown into a dry seed bed and emerged on limited rainfall events in May. Establishment was variable due to the dry conditions and the presence of mice. There was also some evidence of Group C herbicide damage in some trials. Monthly rainfall remained below average throughout the entire cropping season, with extremely low rainfall recorded in September (Figure 1). The first significant drought stress symptoms were observed in all crops during August. Growing season rainfall was the lowest observed in the 10 years of conducting trials in the Curyo region. The late rainfall events observed in October ensured that most crops were harvestable, but grain yield generally only ranged from 0.2 to 0.6 t/ha. Due to the low rainfall and moderate temperatures (Figure 2), growth throughout the season was slow and biomass production was limited. During the reproductive phase there were generally cool conditions with some frosts that affected pod set for all crops. There were no major heat events.



**Figure 1.** Average monthly rainfall at the Curyo trial site (LRZ, Victoria) in 2018 compared with Hopetoun and the long term average for Warracknabeal.



**Figure 2.** Average monthly maximum and minimum temperatures and absolute maximum or minimum at the Curyo trial site (LRZ, Victoria) in 2018 compared with the long term average of Warracknabeal.

## Soil Characterisation

CURYO

Sandy Loam with clay subsoil

Depth (cm)	NH <sub>4</sub> -N	NO <sub>3</sub> -N	P	K	S	Cu	Fe	Mn	Zn	B	EC (dS/m)
	(mg/kg)										
0-10	3.4	6.3	16	393	12	0.5	17	11.1	0.9	2.0	0.19
10-20	2.0	2.5	5	325	10	0.9	27	3.2	0.3	2.9	0.21
20-40	1.7	1.4	5	290	11	1.3	27	1.9	0.8	5.4	0.25
40-60	1.4		5	323	15	1.1	23	1.2	0.2	12.6	0.36
60-100			5	370	26	0.8	20	0.9	0.1	20.5	0.50

Depth (cm)	Exc Al	Exc Ca	Exc Mg (meq/100g)	Exc K	Exc Na	OC (%)	pH (CaCl <sub>2</sub> )	pH (H <sub>2</sub> O)	BD g/cm <sup>3</sup>	Water grav (%)	Water Total (mm)
0-10	0.0	18	4	1.0	0.4	0.68	7.8	8.4	1.42	7	10
10-20	0.0	25	6	0.9	0.9	0.49	8.0	8.6	1.38	11	15
20-40	0.0	24	8	0.8	2.2	0.31	8.3	9.1	1.39	14	39
40-60	0.0	18	8	0.9	4.1	0.19	8.5	9.6	1.51	15	44
60-100	0.0	14	8	0.9	6.7	0.13	8.3	9.5	1.51	14	85