

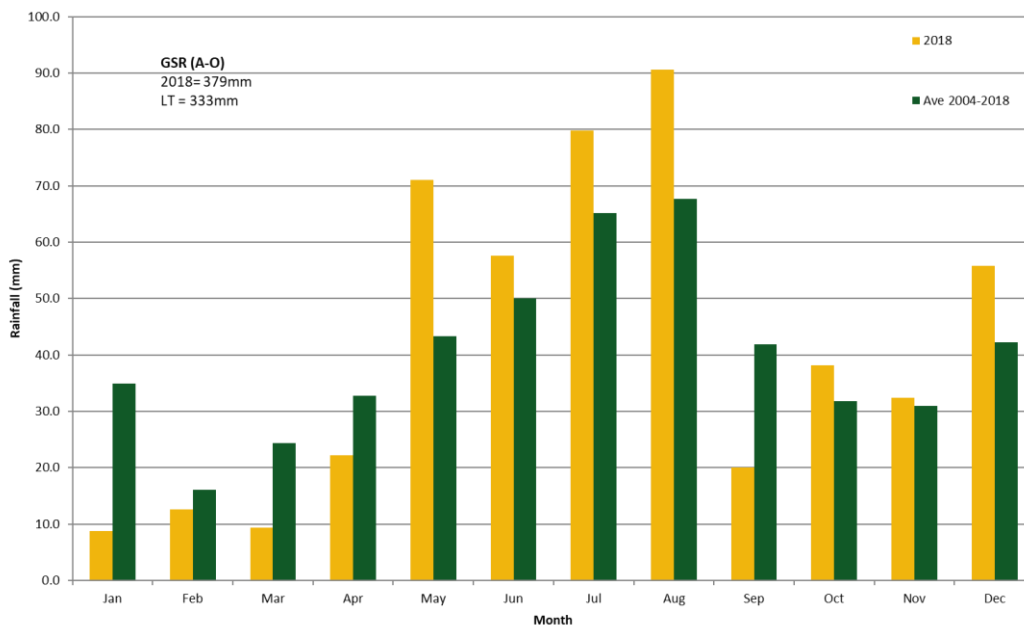
# TELANGATUK, Victoria

## High Rainfall Zone, Southern Wimmera

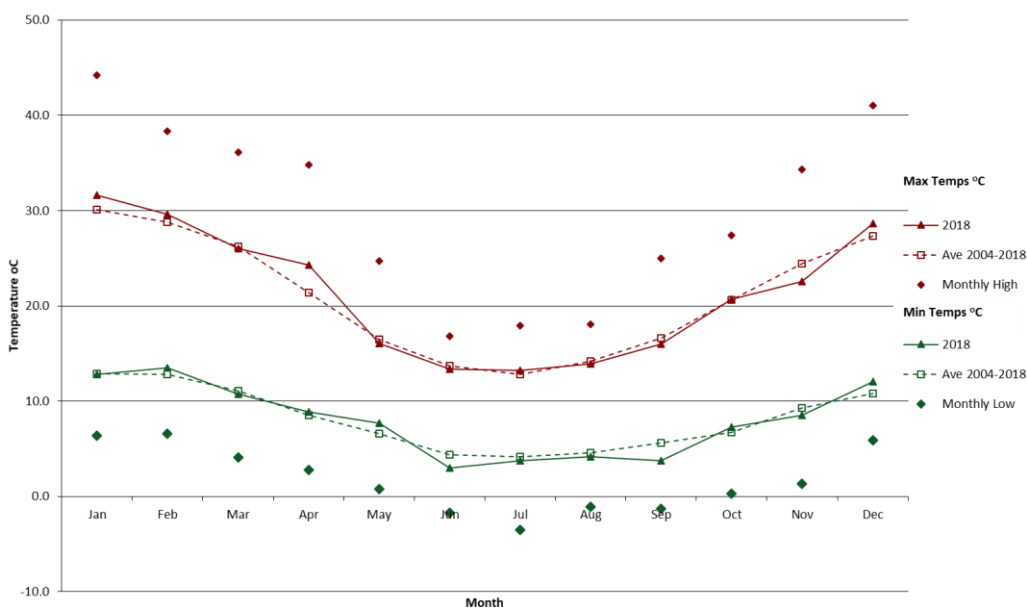
GPS -37.09221, 142.00494

### Seasonal Snapshot

- Trials were sown into a dry seed bed and emerged on rainfall events in May. Establishment was variable due to the presence of slugs, which caused significant damage, particularly to lentil trials. Monthly rainfall was slightly above average throughout the cropping season, except September with below average rainfall (Figure 1). Some waterlogging was observed in parts of the site during winter. Growth was generally adequate throughout the season. There were some good late rainfall events observed in October ensuring adequate grain yield ranging from 1.5-3t/ha. Temperatures were generally close to long term averages (Figure 2) and no major frosts or high temperature events during the reproductive phase.



**Figure 1.** Average monthly rainfall at Kanagulk in 2018 compared with the long-term average for Kanagulk.



**Figure 2.** Average monthly maximum and minimum temperatures and absolute maximum and minimum at Kanagulk in 2018 compared with the long-term average for Kanagulk.

# Soil Characterisation

TELANGATUK

Clay

| Depth<br>(cm) | NH <sub>4</sub> -N | NO <sub>3</sub> -N | P  | K   | S  | Cu  | Fe  | Mn   | Zn  | B   | EC<br>(dS/m) |
|---------------|--------------------|--------------------|----|-----|----|-----|-----|------|-----|-----|--------------|
| (mg/kg)       |                    |                    |    |     |    |     |     |      |     |     |              |
| 0-10          | 8.1                | 14.5               | 34 | 119 | 18 | 0.4 | 146 | 14.0 | 1.2 | 0.6 | 0.11         |
| 10-20         | 4.0                | 9.8                | 20 | 69  | 11 | 0.3 | 118 | 8.2  | 0.5 | 0.3 | 0.07         |
| 20-40         | 4.0                | 4.8                | 7  | 125 | 10 | 0.4 | 83  | 3.9  | 0.3 | 0.9 | 0.07         |
| 40-60         | 3.6                | 2.7                | 5  | 180 | 14 | 0.5 | 55  | 1.8  | 0.2 | 2.2 | 0.09         |
| 60-100        | 2.2                | 2.3                | 5  | 150 | 14 | 0.4 | 33  | 3.0  | 0.2 | 2.3 | 0.17         |

| Depth<br>(cm) | Exc Al | Exc Ca | Exc Mg<br>(meq/100g) | Exc K | Exc Na | OC<br>(%) | pH<br>(CaCl <sub>2</sub> ) | pH<br>(H <sub>2</sub> O) | BD<br>g/cm <sup>3</sup> | Water<br>grav (%) | Water<br>Total (mm) |
|---------------|--------|--------|----------------------|-------|--------|-----------|----------------------------|--------------------------|-------------------------|-------------------|---------------------|
| 0-10          | 0.2    | 67     | 16                   | 5.1   | 0.1    | 1.04      | 4.5                        | 5.2                      | 1.56                    | 10                | 16                  |
| 10-20         | 0.2    | 63     | 14                   | 4.6   | 0.1    | 0.50      | 4.4                        | 5.1                      | 1.65                    | 8                 | 13                  |
| 20-40         | 0.2    | 49     | 35                   | 4.2   | 0.5    | 0.31      | 4.9                        | 5.9                      | 1.51                    | 13                | 41                  |
| 40-60         | 0.0    | 45     | 46                   | 2.7   | 1.2    | 0.29      | 5.6                        | 6.6                      | 1.88                    | 22                | 78                  |
| 60-100        | 0.0    | 50     | 40                   | 1.9   | 1.4    | 0.22      | 7.1                        | 7.9                      | 1.51                    | 16                | 98                  |