

TOPIC: FUNGICIDES FOR SCLEROTINIA MANAGEMENT IN CANOLA

Group:
Mullewa &
Yuna 2011

ABSTRACT

Prosaro Fungicide was the best option for reducing Sclerotinia disease pressure during the season. The treatments were applied at 50% Flowering, before any petal drop had occurred. The return on investment was still very good, with Prosaro returning an additional \$116/ha above the untreated control. Perhaps a larger response to fungicides would have been evident if the sprays had been applied at 20-30% flowering, as infection was very evident before spraying. The Rovral fungicide treatment was disappointing in this trial.

TRIAL DETAILS

Property	Narra Tarra – EF Smart P/L – Austin Rayner.
Soil type	Red Loamy Sand
Crop & Varieties	Eclipse HYB RR Canola
Treatments:	Prosaro and Rovral Fungicides Applied 5 th August , 98L/Ha, 2 bar, 50% flowering (crop at its yellowest)
Replicates:	3 treatments x 3 reps – plots 40m x 8m
Sowing date	
Seeding rate	Approx 2.5 kg/ha
Fertiliser (kg/ha)	
Paddock rotation	
Growing Season Rainfall	Total yearly rain 619.00mm. Total GSR rain May-Oct (inclusive) 396.2mm

	j	f	m	a	m	j	j	a	s	o	n	d
TECHNICAL SUPPORT	170	5	19	105	65	81	66	36	42	13	1	
Grainly Thompson – Crop Circle Consulting ,		8	16	22	25	14	12	6	3			

Rick Horbury and Mike Clarke – Bayer Crop Science

FUNDING SOURCE OR IN-KIND SUPPORT (PARTICULARLY IF NOT A NEFF SOURCE)

Austin Rayner – EF Smart P/L – Manager Narra Tarra – harvesting plots.

Rick Horbury and Mike Clarke – Bayer R & D – rating plots, stats.

Bernie Quade – Landmark – measuring and pegging plots.

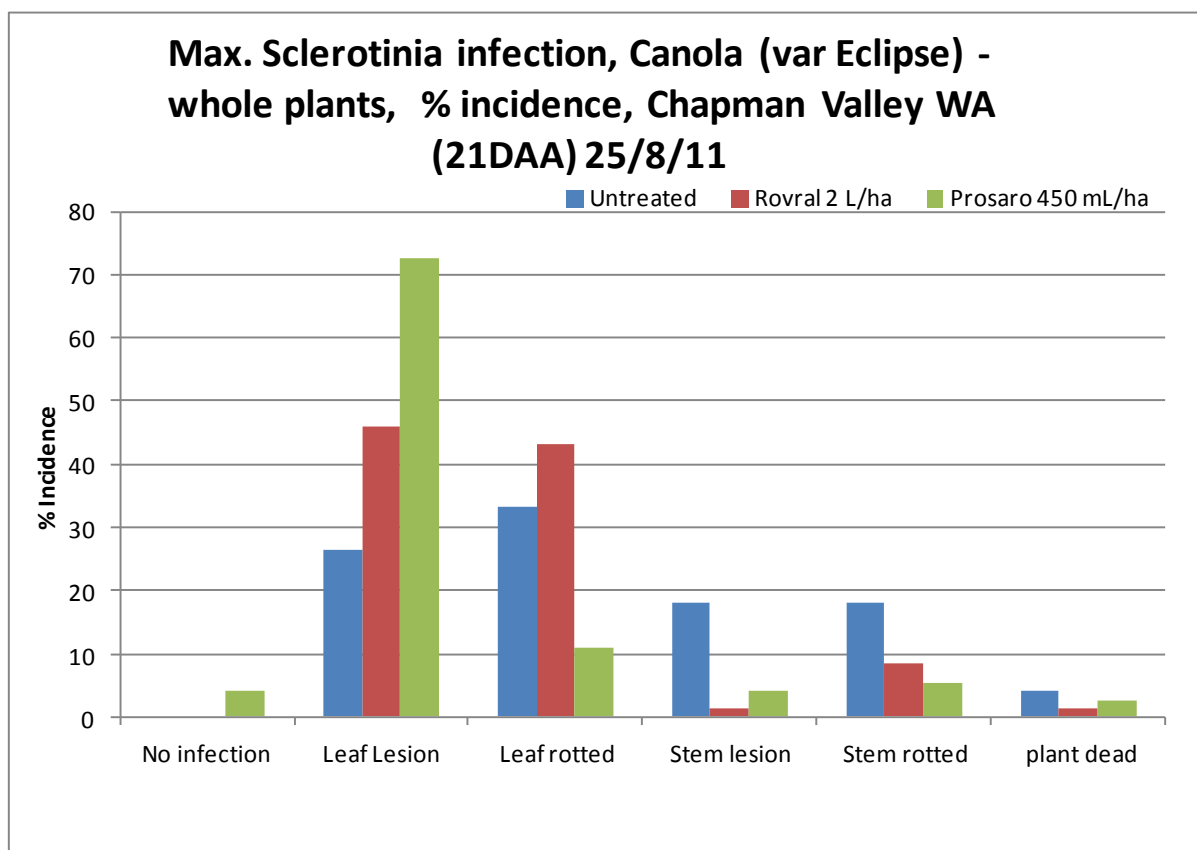
Darren Chitty –Landmark – Harvesting trials.

RESULTS

Graph 1 – Yield and Return of fungicide treatments

TREATMENT	Yield (t/ha)	Grain value/ha	Return above untreated
Untreated	1.70	\$952	0
Application Cost - \$5/ha, Canola Price \$560/t Rovral 2L	1.67	\$935	-\$57.80
Prosaro 450ml	1.97	\$1103	+\$116.50

Graph 2 – Location of Infection points at 21 days after application (courtesy Bayer Crop Science)



ILLUSTRATIONS



L Untreated Plots at 25th August 2011



R Rovral Applied at 2L /Ha



L – Prosaro Applied at 450ml/Ha



R – early infection before fungicides applied.