

# MULLEWA

## TRIAL RESULTS 2010



Mullewa Dryland  
Farmers Initiative Inc.

### TOPIC: KNOCKDOWN MIXTURES ON SMALL GRASS AND BROADLEAF WEEDS

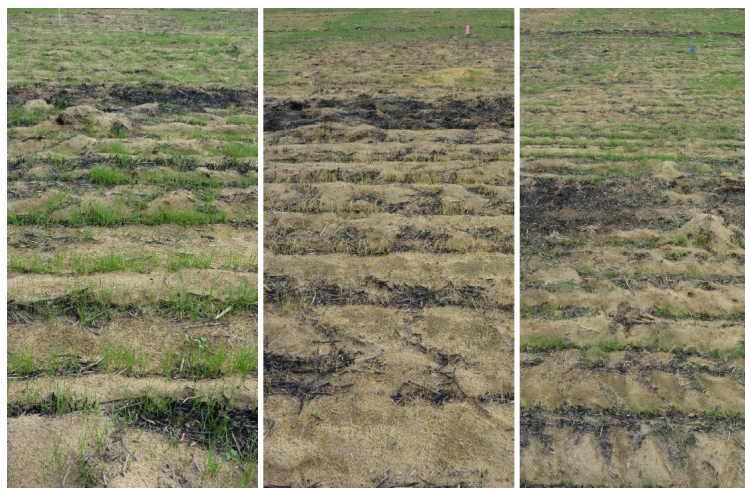
Group: *Mullewa  
2010*

*A trial conducted at Critches at Tenindewa by Grant Thompson*

#### ABSTRACT

To assess a range of knockdown herbicide mixtures on small grasses and mixed broad leaf weeds.

Date Treated: 4/6/2010	TREATMENTS				Control Assessed: 7/1/1998	Total Cost \$	Ryegrass % Control 21 days after application
1	nil						0
2	Alliance	500ml/ha			0.1% BS1000	4.50	22
3	Alliance	1000ml/ha			0.1% BS1000	9.00	60
4	Alliance	1500ml/ha			0.1% BS1000	13.50	70
5	Alliance	2000ml/ha			0.1% BS1000	18.00	88
6	Gramoxone	1000ml/ha			0.1% BS1000	6.50	88
7	Gramoxone	2000ml/ha			0.1% BS1000	13.00	82
8	Gramoxone	1000ml/ha	Hammer	25ml	0.1% BS1000	10.50	77
9	Gramoxone	1000ml/ha	Alliance	500ml	0.1% BS1000	13.50	88
10	Gramoxone	2000ml/ha	Alliance	1000ml	0.1% BS1000	21.00	92
11	RUP CT	1000ml/ha			0.1% BS1000	4.00	77
12	RUP CT	1000ml/ha	Hammer	25ml	0.1% BS1000	8.00	75
13	RUP CT	2000ml/ha			0.1% BS1000	8.00	88
14	Gramoxone	1000ml/ha	Logran B Power	50g	0.1% BS1000	15.00	85
15	RUP CT	1500ml/ha	Logran B Power	50g	0.1% BS1000	13.50	83
16	Gramoxone	1000ml/ha	Rup CT	500ml	0.1% BS1000	8.00	83
17	Basta	1000ml/ha			0.1% BS1000		2
18	Basta	2000ml/ha			0.1% BS1000		10
19	Gramoxone	1000ml/ha	Boxer Gold	2500ml	0.1% BS1000	38.50	90
20	RUP CT	1500ml/ha	Boxer Gold	2500ml	0.1% BS1000	39.50	95
21	Basta	2000ml/ha	Boxer Gold	2500ml	0.1% BS1000		47
22	Gramoxone	1000ml/ha	Sakura	118g	0.1% BS1000	36.46	92
23	Gramoxone	1000ml/ha	Outlook	1000ml	0.1% BS1000	36.50	90
24	RUP CT	1000ml/ha	Basta	500m	0.1% BS1000		87
LSD 0.01						LSD 0.01	30
LSD 0.05						LSD 0.05	41
Coefficient of Variation							22



#### ILLUSTRATIONS

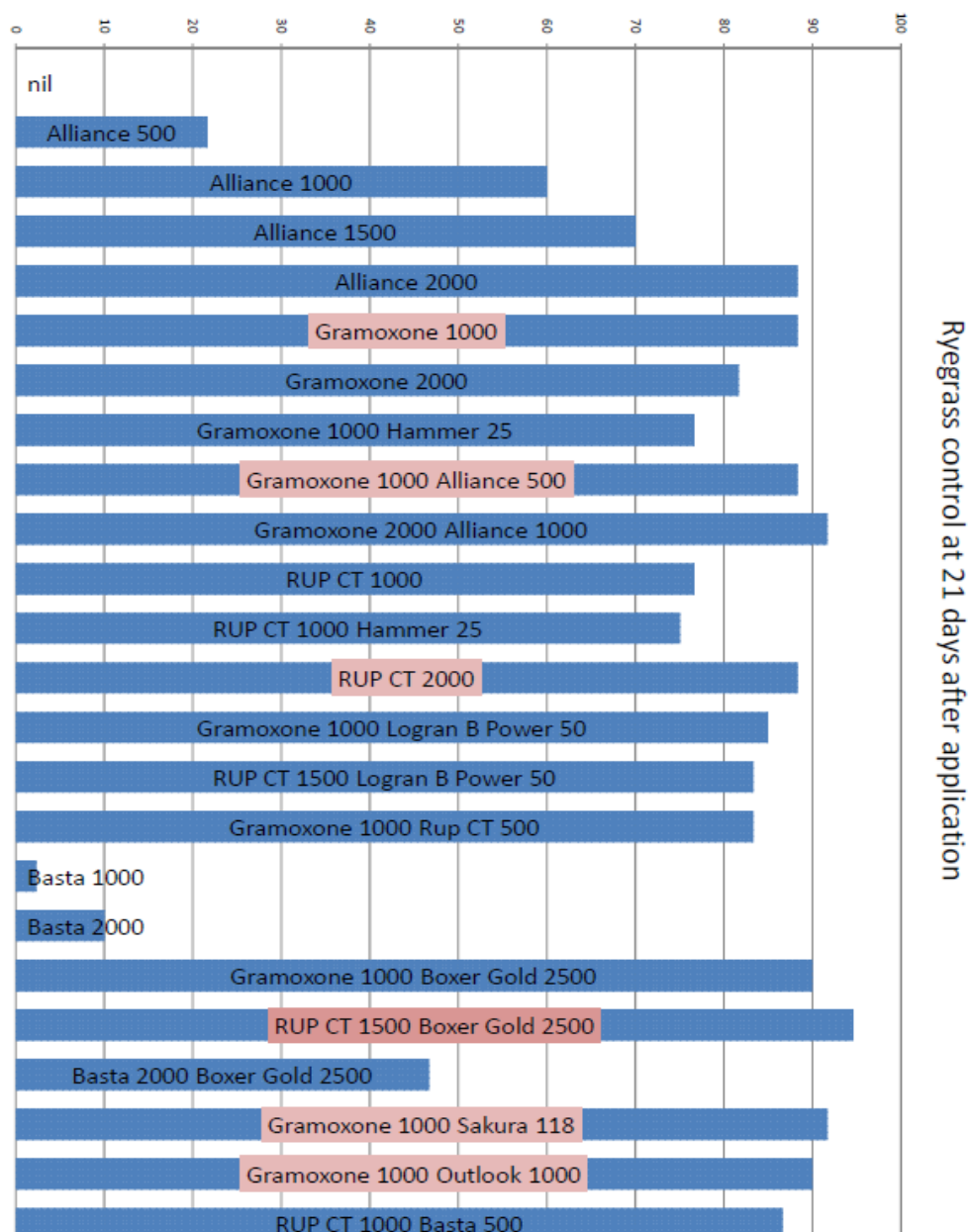
Effects 3 days after application

Left: NIL

Centre: Gramoxone 1L

Right: Roundup CT 1500ml  
+ 2.5L Boxer Gold

NB: Grant Thompson has many more illustrations if you are interested and also copies of a more comprehensive paper with better table resolution  
See: [www.cropcircleconsulting.com.au](http://www.cropcircleconsulting.com.au)



## CONCLUSIONS

- Gramoxone at 1.0L/Ha is the best & most cost effective treatment for fast grass control in the short period before sowing
- If the sprayed grass paddock is left un-sown for several days, the Glyphosate and Boxer Gold treatment proved to have slower visual control but more reliable grass control over the longer period (95%).
- The high rate of Glyphosate CT (2.0L/Ha) was also quite good at the later time of rating (24DAA), 1.0L/Ha did not provide acceptable control (77%)
- Rainfall after application would have greatly enhanced the activity of the soil residual herbicides such as Boxer Gold, Sakura and Outlook
- The possible foliar absorption of Boxer Gold when mixed with Glyphosate made it a clear winner in this trial. It was by far the cleanest treatment at 24 DAA in the absence of tillage. Gramoxone + Sakura(92%) & Gramoxone + Outlook (90%) were very close behind (no tillage).
- Addition of Logran B Power or Hammer did not improve ryegrass control when mixed with Roundup CT or Gramoxone.
- Addition of 500ml Alliance to 1.0L Gramoxone may improve broadleaf weed control, particularly small capeweed, but no improvement in grass control.

## ACKNOWLEDGEMENTS

- Darren Chitty - Landmark R&D Agronomist
- Critch Families- Wyalong Pastoral Co – Tenindewa
- Conducted by Grant Thompson of Crop Circle Consulting in association with NEFF